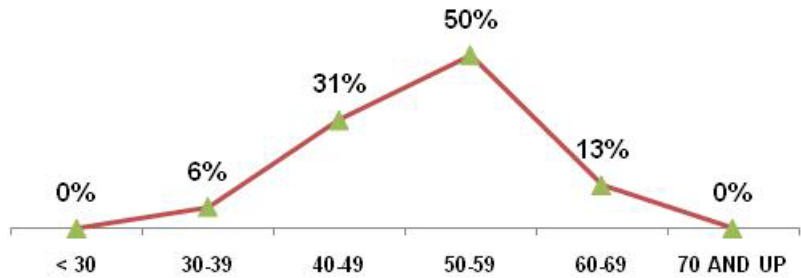


SLAC Site Office

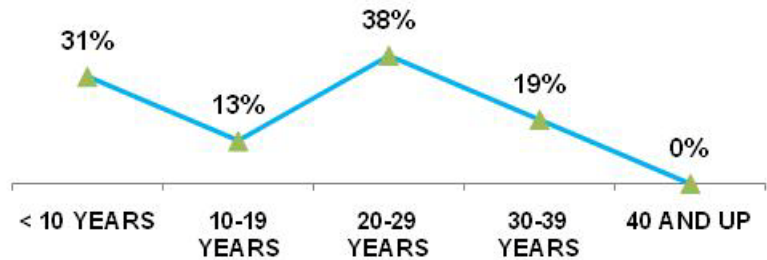
As of SEPTEMBER 30 2010

TOTAL EMPLOYEES	16	
RETIREMENT	Employees	% of Total
ELIGIBLE TO RETIRE IN 2010	3	19%
ELIGIBLE TO RETIRE BY END OF 2014	7	44%
PROBABLE RETIRE BY END OF 2014	3	19%
GENDER	Employees	% of Total
MALES	12	75%
FEMALES	4	25%
AGE GROUPS	Employees	% of Total
< 30	0	0%
30-39	1	6%
40-49	5	31%
50-59	8	50%
60-69	2	13%
70 AND UP	0	0%
AVERAGE AGE	52.4 YRS	
FEDERAL SERVICE	Employees	% of Total
< 10 YEARS	5	31%
10-19 YEARS	2	13%
20-29 YEARS	6	38%
30-39 YEARS	3	19%
40 AND UP	0	0%
AVERAGE LENGTH	18.6 YRS	
EDUCATION LEVELS	Employees	% of Total
NO DEGREE	0	0%
BACHELORS	13	81%
MASTERS	3	19%
DOCTORS	0	0%
ETHNIC GROUPS	Employees	% of Total
NATIVE AMERICAN	1	6%
ASIAN	4	25%
AFRICAN AMERICAN	1	6%
HISPANIC	2	13%
CAUCASIAN	8	50%
SELF-IDENTIFIED	Employees	% of Total
DISABILITY	0	0%
VETERANS PREF.	5	31%

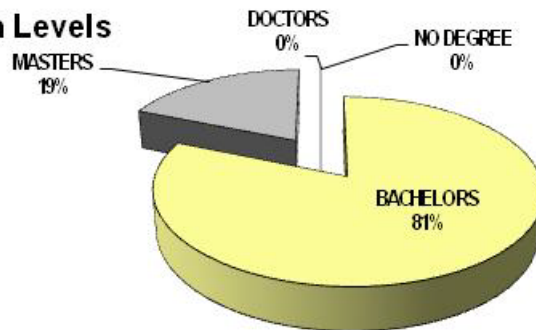
Age Groups



Years of Federal Service Groups



Education Levels



Ethnic Groups

