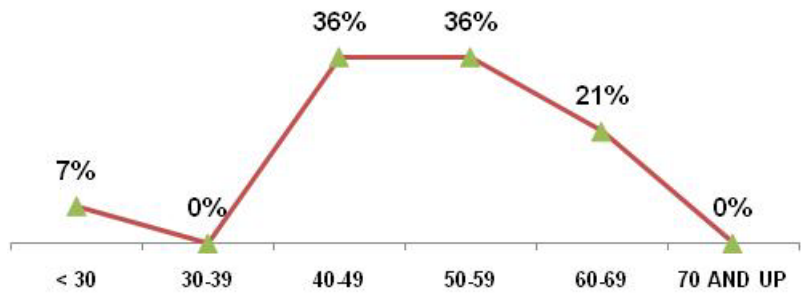


# Fermi Site Office

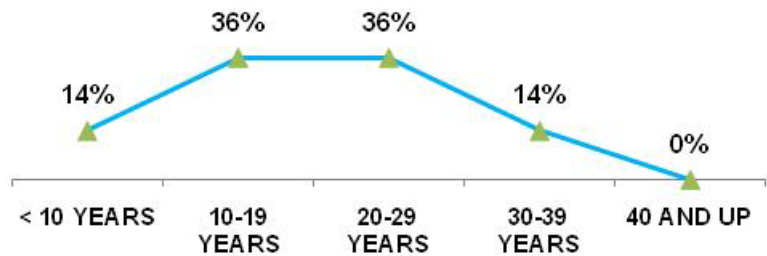
As of SEPTEMBER 30 2010

<b>TOTAL EMPLOYEES</b>	<b>14</b>	
<b>RETIREMENT</b>	<b>Employees</b>	<b>% of Total</b>
ELIGIBLE TO RETIRE IN 2010	3	21%
ELIGIBLE TO RETIRE BY END OF 2014	5	36%
PROBABLE RETIRE BY END OF 2014	3	21%
<b>GENDER</b>	<b>Employees</b>	<b>% of Total</b>
MALES	8	57%
FEMALES	6	43%
<b>AGE GROUPS</b>	<b>Employees</b>	<b>% of Total</b>
< 30	1	7%
30-39	0	0%
40-49	5	36%
50-59	5	36%
60-69	3	21%
70 AND UP	0	0%
<b>AVERAGE AGE</b>	51.5 YRS	
<b>FEDERAL SERVICE</b>	<b>Employees</b>	<b>% of Total</b>
< 10 YEARS	2	14%
10-19 YEARS	5	36%
20-29 YEARS	5	36%
30-39 YEARS	2	14%
40 AND UP	0	0%
<b>AVERAGE LENGTH</b>	19.4 YRS	
<b>EDUCATION LEVELS</b>	<b>Employees</b>	<b>% of Total</b>
NO DEGREE	3	21%
BACHELORS	4	29%
MASTERS	5	36%
DOCTORS	2	14%
<b>ETHNIC GROUPS</b>	<b>Employees</b>	<b>% of Total</b>
NATIVE AMERICAN	0	0%
ASIAN	0	0%
AFRICAN AMERICAN	4	29%
HISPANIC	0	0%
CAUCASIAN	10	71%
<b>SELF-IDENTIFIED</b>	<b>Employees</b>	<b>% of Total</b>
DISABILITY	1	7%
VETERANS PREF.	1	7%

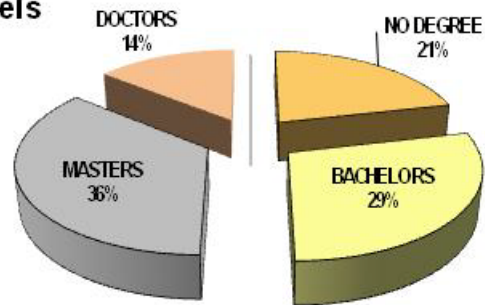
## Age Groups



## Years of Federal Service Groups



## Education Levels



## Ethnic Groups

