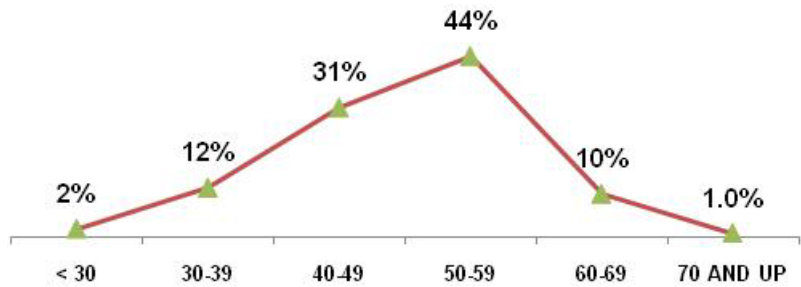


# Idaho Operations Office

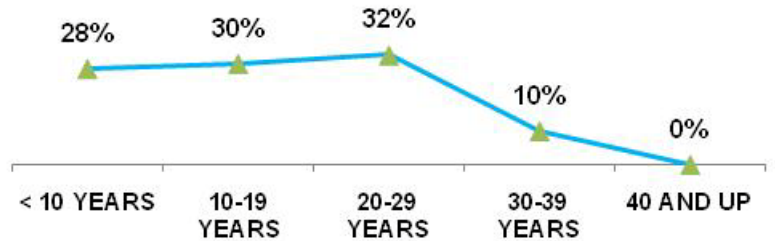
As of SEPTEMBER 30 2010

<b>TOTAL EMPLOYEES</b>	<b>202</b>	
<b>RETIREMENT</b>	<b>Employees</b>	<b>% of Total</b>
ELIGIBLE TO RETIRE IN 2010	30	15%
ELIGIBLE TO RETIRE BY END OF 2014	63	31%
PROBABLE RETIRE BY END OF 2014	38	19%
<b>GENDER</b>	<b>Employees</b>	<b>% of Total</b>
MALES	131	65%
FEMALES	71	35%
<b>AGE GROUPS</b>	<b>Employees</b>	<b>% of Total</b>
< 30	4	2%
30-39	24	12%
40-49	63	31%
50-59	88	44%
60-69	21	10%
70 AND UP	2	1.0%
<b>AVERAGE AGE</b>	50.0 YRS	
<b>FEDERAL SERVICE</b>	<b>Employees</b>	<b>% of Total</b>
< 10 YEARS	57	28%
10-19 YEARS	60	30%
20-29 YEARS	65	32%
30-39 YEARS	20	10%
40 AND UP	0	0%
<b>AVERAGE LENGTH</b>	17.6 YRS	
<b>EDUCATION LEVELS</b>	<b>Employees</b>	<b>% of Total</b>
NO DEGREE	32	16%
BACHELORS	100	50%
MASTERS	65	32%
DOCTORS	5	2%
<b>ETHNIC GROUPS</b>	<b>Employees</b>	<b>% of Total</b>
NATIVE AMERICAN	7	3%
ASIAN	5	2%
AFRICAN AMERICAN	5	2%
HISPANIC	11	5%
CAUCASIAN	174	86%
<b>SELF-IDENTIFIED</b>	<b>Employees</b>	<b>% of Total</b>
DISABILITY	17	8%
VETERANS PREF.	50	25%

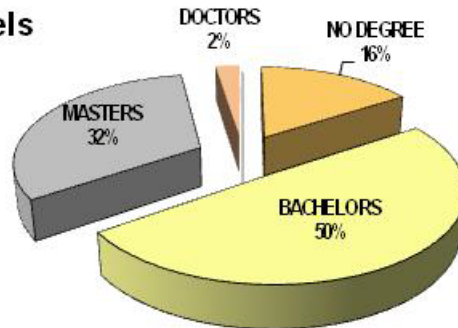
## Age Groups



## Years of Federal Service Groups



## Education Levels



## Ethnic Groups

