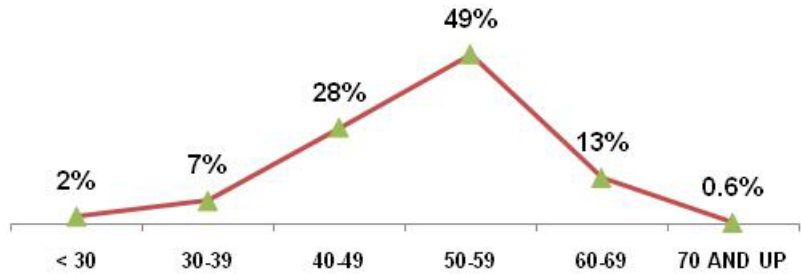


Savannah River Operations Office

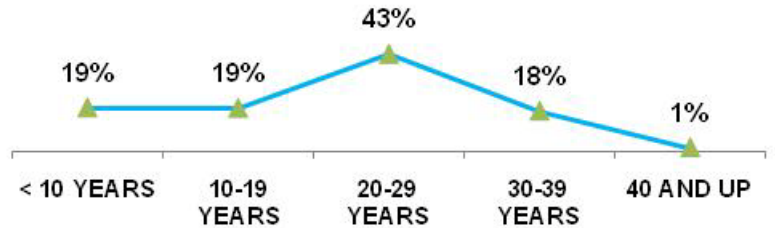
As of SEPTEMBER 30 2010

TOTAL EMPLOYEES	334	
RETIREMENT	Employees	% of Total
ELIGIBLE TO RETIRE IN 2010	69	21%
ELIGIBLE TO RETIRE BY END OF 2014	141	42%
PROBABLE RETIRE BY END OF 2014	80	24%
GENDER	Employees	% of Total
MALES	195	58%
FEMALES	139	42%
AGE GROUPS	Employees	% of Total
< 30	8	2%
30-39	23	7%
40-49	93	28%
50-59	163	49%
60-69	45	13%
70 AND UP	2	0.6%
AVERAGE AGE	51.6 YRS	
FEDERAL SERVICE	Employees	% of Total
< 10 YEARS	64	19%
10-19 YEARS	63	19%
20-29 YEARS	143	43%
30-39 YEARS	59	18%
40 AND UP	5	1%
AVERAGE LENGTH	21.1 YRS	
EDUCATION LEVELS	Employees	% of Total
NO DEGREE	69	21%
BACHELORS	157	47%
MASTERS	100	30%
DOCTORS	8	2%
ETHNIC GROUPS	Employees	% of Total
NATIVE AMERICAN	15	4%
ASIAN	11	3%
AFRICAN AMERICAN	84	25%
HISPANIC	16	5%
CAUCASIAN	208	62%
SELF-IDENTIFIED	Employees	% of Total
DISABILITY	34	10%
VETERANS PREF.	71	21%

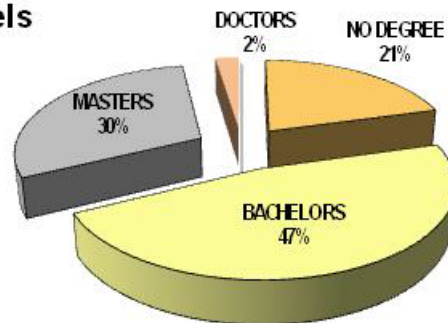
Age Groups



Years of Federal Service Groups



Education Levels



Ethnic Groups

