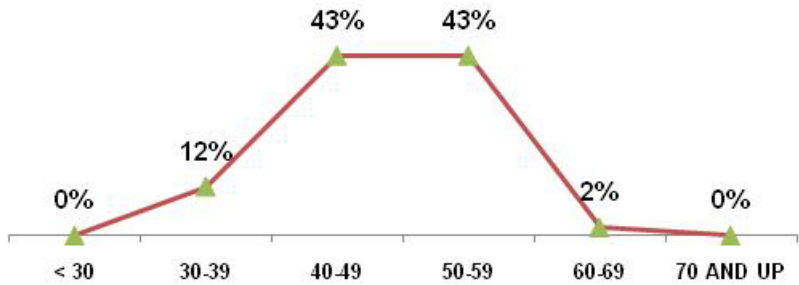


# Portsmouth Paducah Project Office

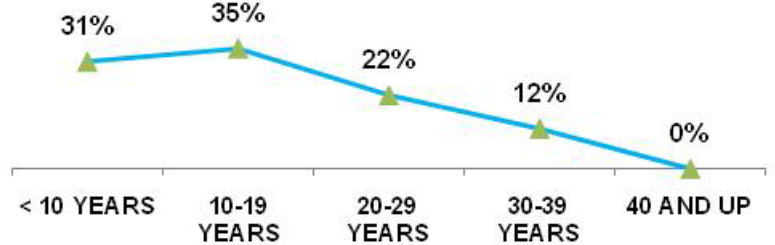
As of SEPTEMBER 30 2010

<b>TOTAL EMPLOYEES</b>	<b>51</b>	
<b>RETIREMENT</b>	<b>Employees</b>	<b>% of Total</b>
ELIGIBLE TO RETIRE IN 2010	5	10%
ELIGIBLE TO RETIRE BY END OF 2014	9	18%
PROBABLE RETIRE BY END OF 2014	5	10%
<b>GENDER</b>	<b>Employees</b>	<b>% of Total</b>
MALES	34	67%
FEMALES	17	33%
<b>AGE GROUPS</b>	<b>Employees</b>	<b>% of Total</b>
< 30	0	0%
30-39	6	12%
40-49	22	43%
50-59	22	43%
60-69	1	2%
70 AND UP	0	0%
<b>AVERAGE AGE</b>	48.4 YRS	
<b>FEDERAL SERVICE</b>	<b>Employees</b>	<b>% of Total</b>
< 10 YEARS	16	31%
10-19 YEARS	18	35%
20-29 YEARS	11	22%
30-39 YEARS	6	12%
40 AND UP	0	0%
<b>AVERAGE LENGTH</b>	16.1 YRS	
<b>EDUCATION LEVELS</b>	<b>Employees</b>	<b>% of Total</b>
NO DEGREE	6	12%
BACHELORS	25	49%
MASTERS	14	27%
DOCTORS	6	12%
<b>ETHNIC GROUPS</b>	<b>Employees</b>	<b>% of Total</b>
NATIVE AMERICAN	1	2%
ASIAN	0	0%
AFRICAN AMERICAN	2	4%
HISPANIC	0	0%
CAUCASIAN	48	94%
<b>SELF-IDENTIFIED</b>	<b>Employees</b>	<b>% of Total</b>
DISABILITY	2	4%
VETERANS PREF.	9	18%

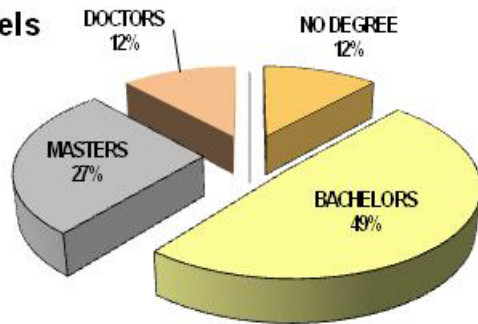
## Age Groups



## Years of Federal Service Groups



## Education Levels



## Ethnic Groups

