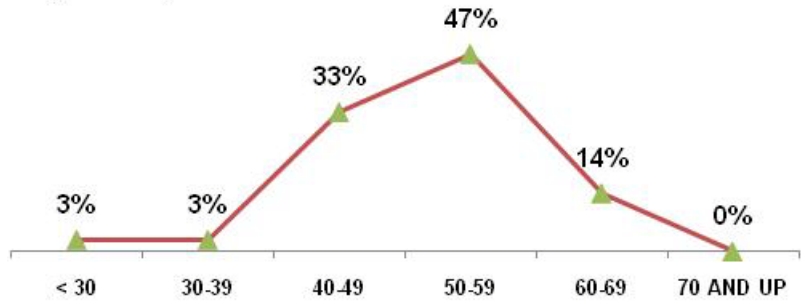


Idaho Operations Office (EM Positions)

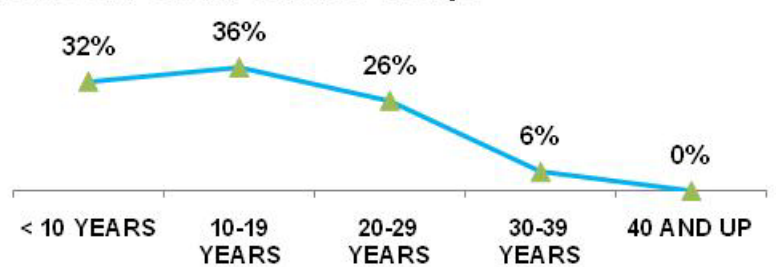
As of SEPTEMBER 30 2010

TOTAL EMPLOYEES	72	
RETIREMENT	Employees	% of Total
ELIGIBLE TO RETIRE IN 2010	7	10%
ELIGIBLE TO RETIRE BY END OF 2014	28	39%
PROBABLE RETIRE BY END OF 2014	13	18%
GENDER	Employees	% of Total
MALES	57	79%
FEMALES	15	21%
AGE GROUPS	Employees	% of Total
< 30	2	3%
30-39	2	3%
40-49	24	33%
50-59	34	47%
60-69	10	14%
70 AND UP	0	0%
AVERAGE AGE	51.6 YRS	
FEDERAL SERVICE	Employees	% of Total
< 10 YEARS	23	32%
10-19 YEARS	26	36%
20-29 YEARS	19	26%
30-39 YEARS	4	6%
40 AND UP	0	0%
AVERAGE LENGTH	16.5 YRS	
EDUCATION LEVELS	Employees	% of Total
NO DEGREE	8	11%
BACHELORS	40	56%
MASTERS	22	31%
DOCTORS	2	3%
ETHNIC GROUPS	Employees	% of Total
NATIVE AMERICAN	1	1%
ASIAN	2	3%
AFRICAN AMERICAN	2	3%
HISPANIC	3	4%
CAUCASIAN	64	89%
SELF-IDENTIFIED	Employees	% of Total
DISABILITY	4	6%
VETERANS PREF.	22	31%

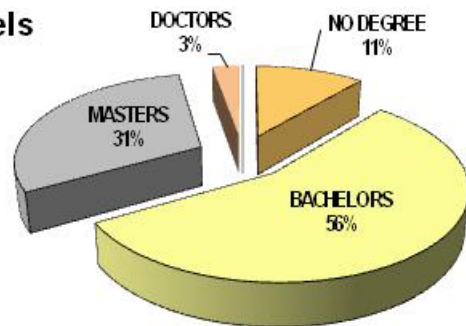
Age Groups



Years of Federal Service Groups



Education Levels



Ethnic Groups

