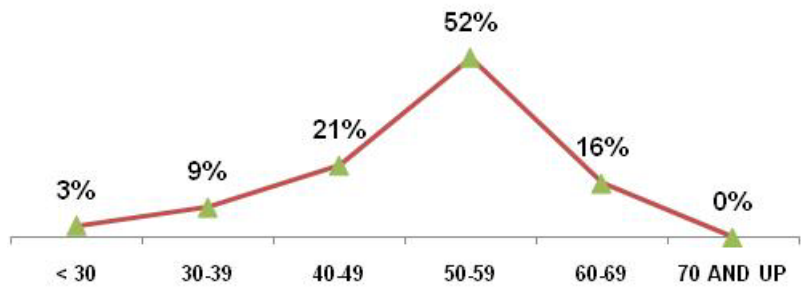


# Carlsbad Field Office

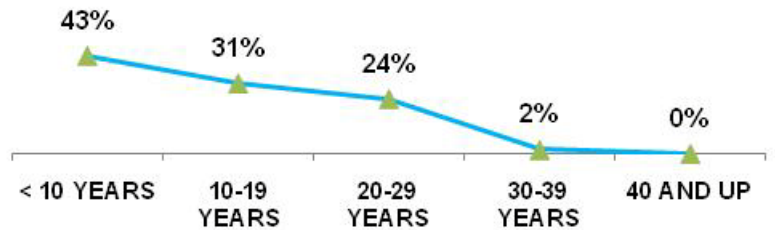
As of SEPTEMBER 30 2010

<b>TOTAL EMPLOYEES</b>	<b>58</b>	
<b>RETIREMENT</b>		
	<b>Employees</b>	<b>% of Total</b>
ELIGIBLE TO RETIRE IN 2010	4	7%
ELIGIBLE TO RETIRE BY END OF 2014	15	26%
PROBABLE RETIRE BY END OF 2014	7	12%
<b>GENDER</b>		
	<b>Employees</b>	<b>% of Total</b>
MALES	39	67%
FEMALES	19	33%
<b>AGE GROUPS</b>		
	<b>Employees</b>	<b>% of Total</b>
< 30	2	3%
30-39	5	9%
40-49	12	21%
50-59	30	52%
60-69	9	16%
70 AND UP	0	0%
<b>AVERAGE AGE</b>	51.6 YRS	
<b>FEDERAL SERVICE</b>		
	<b>Employees</b>	<b>% of Total</b>
< 10 YEARS	25	43%
10-19 YEARS	18	31%
20-29 YEARS	14	24%
30-39 YEARS	1	2%
40 AND UP	0	0%
<b>AVERAGE LENGTH</b>	13.1 YRS	
<b>EDUCATION LEVELS</b>		
	<b>Employees</b>	<b>% of Total</b>
NO DEGREE	13	22%
BACHELORS	23	40%
MASTERS	18	31%
DOCTORS	4	7%
<b>ETHNIC GROUPS</b>		
	<b>Employees</b>	<b>% of Total</b>
NATIVE AMERICAN	3	5%
ASIAN	1	2%
AFRICAN AMERICAN	0	0%
HISPANIC	11	19%
CAUCASIAN	43	74%
<b>SELF-IDENTIFIED</b>		
	<b>Employees</b>	<b>% of Total</b>
DISABILITY	3	5%
VETERANS PREF.	19	33%

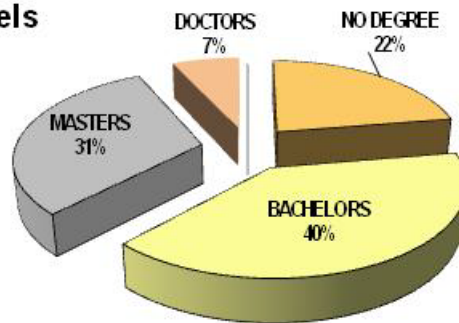
## Age Groups



## Years of Federal Service Groups



## Education Levels



## Ethnic Groups

