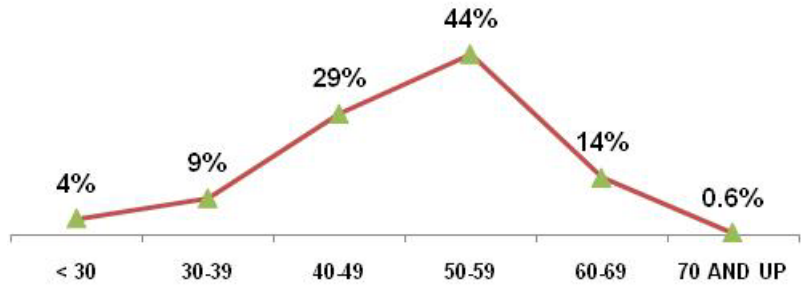


Assistant Secretary for Environmental Management

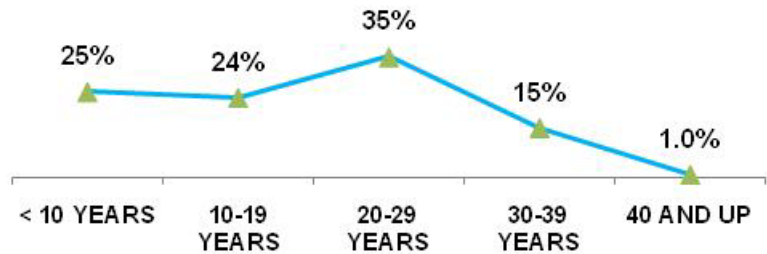
As of SEPTEMBER 30 2010

TOTAL EMPLOYEES	1646	
RETIREMENT	Employees	% of Total
ELIGIBLE TO RETIRE IN 2010	307	19%
ELIGIBLE TO RETIRE BY END OF 2014	636	39%
PROBABLE RETIRE BY END OF 2014	373	23%
GENDER	Employees	% of Total
MALES	999	61%
FEMALES	647	39%
AGE GROUPS	Employees	% of Total
< 30	66	4%
30-39	146	9%
40-49	480	29%
50-59	717	44%
60-69	227	14%
70 AND UP	10	0.6%
AVERAGE AGE	50.7 YRS	
FEDERAL SERVICE	Employees	% of Total
< 10 YEARS	416	25%
10-19 YEARS	388	24%
20-29 YEARS	584	35%
30-39 YEARS	242	15%
40 AND UP	16	1.0%
AVERAGE LENGTH	19.1 YRS	
EDUCATION LEVELS	Employees	% of Total
NO DEGREE	306	19%
BACHELORS	755	46%
MASTERS	506	31%
DOCTORS	79	5%
ETHNIC GROUPS	Employees	% of Total
NATIVE AMERICAN	35	2%
ASIAN	90	5%
AFRICAN AMERICAN	207	13%
HISPANIC	91	6%
CAUCASIAN	1223	74%
SELF-IDENTIFIED	Employees	% of Total
DISABILITY	122	7%
VETERANS PREF.	304	18%

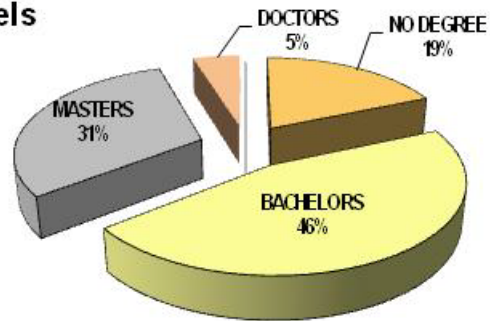
Age Groups



Years of Federal Service Groups



Education Levels



Ethnic Groups

