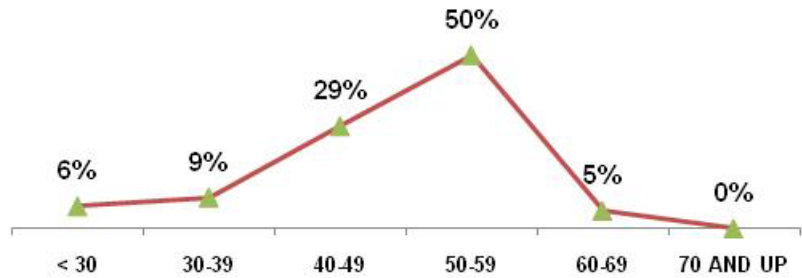


## Y-12 Site Office

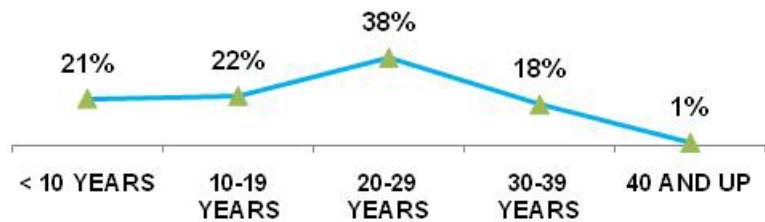
As of SEPTEMBER 30 2010

<b>TOTAL EMPLOYEES</b>	<b>78</b>	
<b>RETIREMENT</b>	<b>Employees</b>	<b>% of Total</b>
ELIGIBLE TO RETIRE IN 2010	9	12%
ELIGIBLE TO RETIRE BY END OF 2014	28	36%
PROBABLE RETIRE BY END OF 2014	13	17%
<b>GENDER</b>	<b>Employees</b>	<b>% of Total</b>
MALES	50	64%
FEMALES	28	36%
<b>AGE GROUPS</b>	<b>Employees</b>	<b>% of Total</b>
< 30	5	6%
30-39	7	9%
40-49	23	29%
50-59	39	50%
60-69	4	5%
70 AND UP	0	0%
<b>AVERAGE AGE</b>	49.2 YRS	
<b>FEDERAL SERVICE</b>	<b>Employees</b>	<b>% of Total</b>
< 10 YEARS	16	21%
10-19 YEARS	17	22%
20-29 YEARS	30	38%
30-39 YEARS	14	18%
40 AND UP	1	1%
<b>AVERAGE LENGTH</b>	20.7 YRS	
<b>EDUCATION LEVELS</b>	<b>Employees</b>	<b>% of Total</b>
NO DEGREE	10	13%
BACHELORS	40	51%
MASTERS	27	35%
DOCTORS	1	1%
<b>ETHNIC GROUPS</b>	<b>Employees</b>	<b>% of Total</b>
NATIVE AMERICAN	0	0%
ASIAN	4	5%
AFRICAN AMERICAN	5	6%
HISPANIC	1	1%
CAUCASIAN	68	87%
<b>SELF-IDENTIFIED</b>	<b>Employees</b>	<b>% of Total</b>
DISABILITY	4	5%
VETERANS PREF.	22	28%

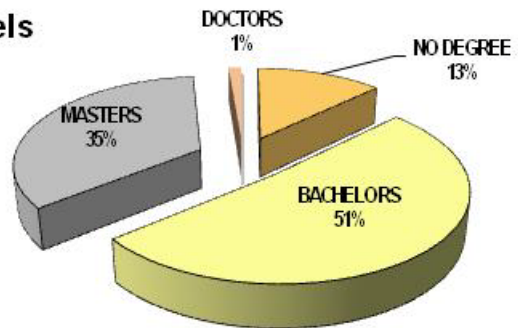
### Age Groups



### Years of Federal Service Groups



### Education Levels



### Ethnic Groups

