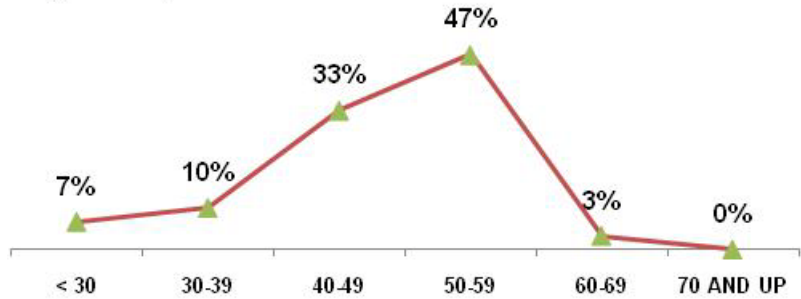


Savannah River Site Office

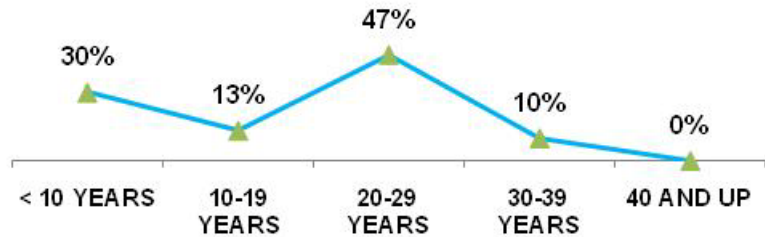
As of SEPTEMBER 30 2010

TOTAL EMPLOYEES	30	
RETIREMENT		
	Employees	% of Total
ELIGIBLE TO RETIRE IN 2010	4	13%
ELIGIBLE TO RETIRE BY END OF 2014	8	27%
PROBABLE RETIRE BY END OF 2014	4	13%
GENDER		
	Employees	% of Total
MALES	17	57%
FEMALES	13	43%
AGE GROUPS		
	Employees	% of Total
< 30	2	7%
30-39	3	10%
40-49	10	33%
50-59	14	47%
60-69	1	3%
70 AND UP	0	0%
AVERAGE AGE	47.6 YRS	
FEDERAL SERVICE		
	Employees	% of Total
< 10 YEARS	9	30%
10-19 YEARS	4	13%
20-29 YEARS	14	47%
30-39 YEARS	3	10%
40 AND UP	0	0%
AVERAGE LENGTH	19.1 YRS	
EDUCATION LEVELS		
	Employees	% of Total
NO DEGREE	5	17%
BACHELORS	15	50%
MASTERS	10	33%
DOCTORS	0	0%
ETHNIC GROUPS		
	Employees	% of Total
NATIVE AMERICAN	1	3%
ASIAN	1	3%
AFRICAN AMERICAN	6	20%
HISPANIC	0	0%
CAUCASIAN	22	73%
SELF-IDENTIFIED		
	Employees	% of Total
DISABILITY	0	0%
VETERANS PREF.	4	13%

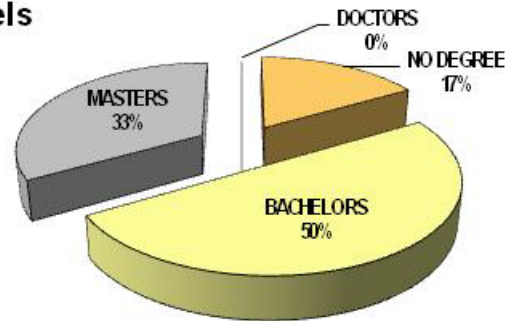
Age Groups



Years of Federal Service Groups



Education Levels



Ethnic Groups

