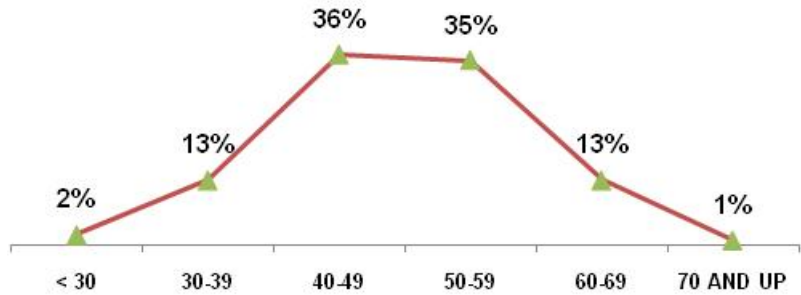


Nevada Site Office

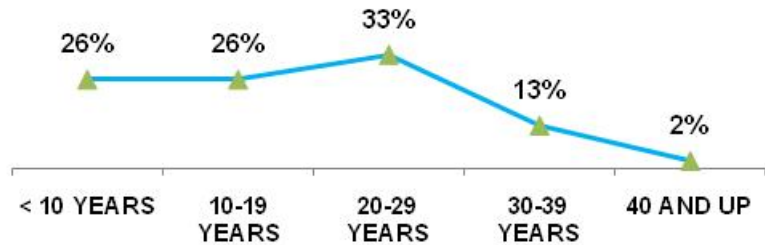
As of SEPTEMBER 30 2010

TOTAL EMPLOYEES	96	
RETIREMENT	Employees	% of Total
ELIGIBLE TO RETIRE IN 2010	16	17%
ELIGIBLE TO RETIRE BY END OF 2014	32	33%
PROBABLE RETIRE BY END OF 2014	23	24%
GENDER	Employees	% of Total
MALES	63	66%
FEMALES	33	34%
AGE GROUPS	Employees	% of Total
< 30	2	2%
30-39	12	13%
40-49	35	36%
50-59	34	35%
60-69	12	13%
70 AND UP	1	1%
AVERAGE AGE	50.1 YRS	
FEDERAL SERVICE	Employees	% of Total
< 10 YEARS	25	26%
10-19 YEARS	25	26%
20-29 YEARS	32	33%
30-39 YEARS	12	13%
40 AND UP	2	2%
AVERAGE LENGTH	18.6 YRS	
EDUCATION LEVELS	Employees	% of Total
NO DEGREE	14	15%
BACHELORS	50	52%
MASTERS	31	32%
DOCTORS	1	1%
ETHNIC GROUPS	Employees	% of Total
NATIVE AMERICAN	1	1%
ASIAN	6	6%
AFRICAN AMERICAN	5	5%
HISPANIC	12	13%
CAUCASIAN	72	75%
SELF-IDENTIFIED	Employees	% of Total
DISABILITY	4	4%
VETERANS PREF.	25	26%

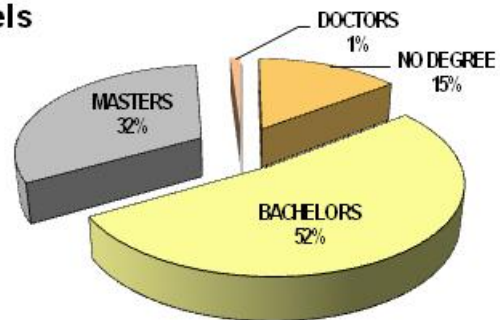
Age Groups



Years of Federal Service Groups



Education Levels



Ethnic Groups

